



Distributed by:

Coolant Fed with a Double Margin Design for Longer Tool Life and Higher Performance



Tool Size	3XD EDP No.	List \$	5XD EDP No.	List \$
3.0 mm	TA209744.0300	68.51	TA219744.0300	80.63
3.1 mm	TA209744.0310	68.51	TA219744.0310	80.63
3.15 mm	TA209744.0315	68.51	TA219744.0315	80.63
1/8"	TA209744.0318	68.51	TA219744.0318	80.63
3.2 mm	TA209744.0320	68.51	TA219744.0320	80.63
3.22 mm	TA209744.0322	68.51	TA219744.0322	80.63
3.25	TA209744.0325	68.51	TA219744.0325	80.63
3.3 mm	TA209744.0330	68.51	TA219744.0330	80.63
3.35 mm	TA209744.0335	68.51	TA219744.0335	80.63
3.38 mm	TA209744.0338	68.51	TA219744.0338	80.63
3.4 mm	TA209744.0340	68.51	TA219744.0340	80.63
3.5 mm	TA209744.0350	68.51	TA219744.0350	80.63
9/64" (#28)	TA209744.0357	68.51	TA219744.0357	80.63
3.6 mm	TA209744.0360	68.51	TA219744.0360	80.63
3.65 mm	TA209744.0365	68.51	TA219744.0365	80.63
3.7 mm	TA209744.0370	68.51	TA219744.0370	80.63
#25	TA209744.0380	68.51	TA219744.0380	80.63
3.85 mm	TA209744.0385	68.51	TA219744.0385	80.63
3.88 mm	TA209744.0388	68.51	TA219744.0388	80.63
3.9 mm	TA209744.0390	68.51	TA219744.0390	80.63
5/32"	TA209744.0397	68.51	TA219744.0397	80.63
4.0mm	TA209744.0400	68.51	TA219744.0400	80.63
#21	TA209744.0404	68.51	TA219744.0404	80.63
4.1 mm	TA209744.0410	68.51	TA219744.0410	80.63
4.15 mm	TA209744.0415	68.51	TA219744.0415	80.63
4.2 mm	TA209744.0420	68.51	TA219744.0420	80.63
#18	TA209744.0430	68.51	TA219744.0430	80.63
4.35 mm	TA209744.0435	68.51	TA219744.0435	80.63
11/64"	TA209744.0437	68.51	TA219744.0437	80.63
4.4 mm	TA209744.0440	68.51	TA219744.0440	80.63
4.45 mm	TA209744.0445	68.51	TA219744.0445	80.63
4.5 mm	TA209744.0450	68.51	TA219744.0450	80.63
4.6 mm	TA209744.0460	68.51	TA219744.0460	80.63
4.65 mm	TA209744.0465	68.51	TA219744.0465	80.63
4.7 mm	TA209744.0470	68.51	TA219744.0470	80.63
3/16"	TA209744.0476	68.51	TA219744.0476	80.63
4.8 mm	TA209744.0480	68.51	TA219744.0480	80.63
4.9 mm	TA209744.0490	68.51	TA219744.0490	80.63
5.0 mm	TA209744.0500	68.51	TA219744.0500	80.63
5.1 mm	TA209744.0510	68.51	TA219744.0510	80.63
#7	TA209744.0511	68.51	TA219744.0511	80.63
13/64"	TA209744.0516	68.51	TA219744.0516	80.63
5.2 mm	TA209744.0520	68.51	TA219744.0520	80.63
5.3 mm	TA209744.0530	68.51	TA219744.0530	80.63
5.4 mm	TA209744.0540	68.51	TA219744.0540	80.63
#3	TA209744.0541	68.51	TA219744.0541	80.63
5.5 mm	TA209744.0550	68.51	TA219744.0550	80.63
7/32"	TA209744.0556	68.51	TA219744.0556	80.63
5.6 mm	TA209744.0560	68.51	TA219744.0560	80.63
5.7 mm	TA209744.0570	68.51	TA219744.0570	80.63
5.75 mm	TA209744.0575	68.51	TA219744.0575	80.63
5.8 mm	TA209744.0580	68.51	TA219744.0580	80.63
5.9 mm	TA209744.0590	68.51	TA219744.0590	80.63
15/64"	TA209744.0595	68.51	TA219744.0595	80.63
6.0 mm	TA209744.0600	68.51	TA219744.0600	80.63
6.1 mm	TA209744.0610	77.01	TA219744.0610	90.56
6.2 mm	TA209744.0620	77.01	TA219744.0620	90.56
6.3 mm	TA209744.0630	77.01	TA219744.0630	90.56
1/4"	TA209744.0635	77.01	TA219744.0635	90.56
6.4 mm	TA209744.0640	77.01	TA219744.0640	90.56
6.5 mm	TA209744.0650	77.01	TA219744.0650	90.56
F	TA209744.0653	77.01	TA219744.0653	90.56

Tool Size	3XD EDP No.	List \$	5XD EDP No.	List \$
6.6 mm	TA209744.0660	77.01	TA219744.0660	90.56
6.7mm	TA209744.0670	77.01	TA219744.0670	90.56
17/64"	TA209744.0675	77.01	TA219744.0675	90.56
6.8 mm	TA209744.0680	77.01	TA219744.0680	90.56
6.9 mm	TA209744.0690	77.01	TA219744.0690	90.56
7.0 mm	TA209744.0700	77.01	TA219744.0700	90.56
7.1 mm	TA209744.0710	77.01	TA219744.0710	90.56
9/32"	TA209744.0715	77.01	TA219744.0715	90.56
7.2 mm	TA209744.0720	77.01	TA219744.0720	90.56
7.25 mm	TA209744.0725	77.01	TA219744.0725	90.56
7.3 mm	TA209744.0730	77.01	TA219744.0730	90.56
7.4 mm	TA209744.0740	77.01	TA219744.0740	90.56
7.45 mm	TA209744.0745	77.01	TA219744.0745	90.56
7.5 mm	TA209744.0750	77.01	TA219744.0750	90.56
19/64"	TA209744.0754	77.01	TA219744.0754	90.56
7.6 mm	TA209744.0760	77.01	TA219744.0760	90.56
7.7 mm	TA209744.0770	77.01	TA219744.0770	90.56
7.8 mm	TA209744.0780	77.01	TA219744.0780	90.56
7.9 mm	TA209744.0790	77.01	TA219744.0790	90.56
5/16"	TA209744.0794	77.01	TA219744.0794	90.56
8.0 mm	TA209744.0800	77.01	TA219744.0800	90.56
8.1 mm	TA209744.0810	93.06	TA219744.0810	109.45
8.2 mm	TA209744.0820	93.06	TA219744.0820	109.45
8.3 mm	TA209744.0830	93.06	TA219744.0830	109.45
21/64"	TA209744.0833	93.06	TA219744.0833	109.45
8.4 mm	TA209744.0840	93.06	TA219744.0840	109.45
8.45 mm	TA209744.0845	93.06	TA219744.0845	109.45
8.5 mm	TA209744.0850	93.06	TA219744.0850	109.45
8.6 mm	TA209744.0860	93.06	TA219744.0860	109.45
8.7 mm	TA209744.0870	93.06	TA219744.0870	109.45
11/32"	TA209744.0873	93.06	TA219744.0873	109.45
8.8 mm	TA209744.0880	93.06	TA219744.0880	109.45
8.9 mm	TA209744.0890	93.06	TA219744.0890	109.45
9.0 mm	TA209744.0900	93.06	TA219744.0900	109.45
9.05 mm	TA209744.0905	93.06	TA219744.0905	109.45
9.1 mm	TA209744.0910	93.06	TA219744.0910	109.45
23/64"	TA209744.0913	93.06	TA219744.0913	109.45
9.2 mm	TA209744.0920	93.06	TA219744.0920	109.45
9.3 mm	TA209744.0930	93.06	TA219744.0930	109.45
9.35 mm	TA209744.0935	93.06	TA219744.0935	109.45
9.4 mm	TA209744.0940	93.06	TA219744.0940	109.45
9.45 mm	TA209744.0945	93.06	TA219744.0945	109.45
9.5 mm	TA209744.0950	93.06	TA219744.0950	109.45
3/8"	TA209744.0953	93.06	TA219744.0953	109.45
9.6 mm	TA209744.0960	93.06	TA219744.0960	109.45
9.7 mm	TA209744.0970	93.06	TA219744.0970	109.45
9.8 mm	TA209744.0980	93.06	TA219744.0980	109.45
9.9 mm	TA209744.0990	93.06	TA219744.0990	109.45
25/64"	TA209744.0992	93.06	TA219744.0992	109.45
10.0 mm	TA209744.1000	93.06	TA219744.1000	109.45
10.1 mm	TA209744.1010	125.35	TA219744.1010	147.56
10.2 mm	TA209744.1020	125.35	TA219744.1020	147.56
10.25 mm	TA209744.1025	125.35	TA219744.1025	147.56
10.3 mm	TA209744.1030	125.35	TA219744.1030	147.56
13/32"	TA209744.1032	125.35	TA219744.1032	147.56
10.35 mm	TA209744.1035	125.35	TA219744.1035	147.56
10.4 mm	TA209744.1040	125.35	TA219744.1040	147.56
10.5 mm	TA209744.1050	125.35	TA219744.1050	147.56
10.55 mm	TA209744.1055	125.35	TA219744.1055	147.56
10.6 mm	TA209744.1060	125.35	TA219744.1060	147.56
10.7 mm	TA209744.1070	125.35	TA219744.1070	147.56
27/64"	TA209744.1072	125.35	TA219744.1072	147.56

Tool Size	3XD EDP No.	List \$	5XD EDP No.	List \$
10.8 mm	TA209744.1080	125.35	TA219744.1080	147.56
10.9 mm	TA209744.1090	125.35	TA219744.1090	147.56
11.0 mm	TA209744.1100	125.35	TA219744.1100	147.56
11.1 mm	TA209744.1110	125.35	TA219744.1110	147.56
7/16"	TA209744.1111	125.35	TA219744.1111	147.56
11.2 mm	TA209744.1120	125.35	TA219744.1120	147.56
11.25 mm	TA209744.1125	125.35	TA219744.1125	147.56
11.3 mm	TA209744.1130	125.35	TA219744.1130	147.56
11.35 mm	TA209744.1135	125.35	TA219744.1135	147.56
11.4 mm	TA209744.1140	125.35	TA219744.1140	147.56
11.45 mm	TA209744.1145	125.35	TA219744.1145	147.56
11.5 mm	TA209744.1150	125.35	TA219744.1150	147.56
29/64"	TA209744.1151	125.35	TA219744.1151	147.56
11.6 mm	TA209744.1160	125.35	TA219744.1160	147.56
11.7 mm	TA209744.1170	125.35	TA219744.1170	147.56
11.8 mm	TA209744.1180	125.35	TA219744.1180	147.56
11.9 mm	TA209744.1190	125.35	TA219744.1190	147.56
15/32"	TA209744.1191	125.35	TA219744.1191	147.56
12.0 mm	TA209744.1200	182.68	TA219744.1200	214.81
12.15 mm	TA209744.1215	182.68	TA219744.1215	214.81
12.2 mm	TA209744.1220	182.68	TA219744.1220	214.81
12.3 mm	TA209744.1230	182.68	TA219744.1230	214.81
12.5 mm	TA209744.1250	182.68	TA219744.1250	214.81
12.55 mm	TA209744.1255	182.68	TA219744.1255	214.81
12.6 mm	TA209744.1260	182.68	TA219744.1260	214.81
1/2"	TA209744.1270	182.68	TA219744.1270	214.81
12.8 mm	TA209744.1280	182.68	TA219744.1280	214.81
13.0 mm	TA209744.1300	182.68	TA219744.1300	214.81
13.1 mm	TA209744.1310	182.68	TA219744.1310	214.81
13.3 mm	TA209744.1330	182.68	TA219744.1330	214.81
13.35 mm	TA209744.1335	182.68	TA219744.1335	214.81
13.45 mm	TA209744.1345	182.68	TA219744.1345	214.81
17/32"	TA209744.1349	182.68	TA219744.1349	214.81
13.5 mm	TA209744.1350	182.68	TA219744.1350	214.81
13.6 mm	TA209744.1360	182.68	TA219744.1360	214.81
13.65 mm	TA209744.1365	182.68	TA219744.1365	214.81
13.7 mm	TA209744.1370	182.68	TA219744.1370	214.81
13.8 mm	TA209744.1380	182.68	TA219744.1380	214.81
35/64"	TA209744.1389	182.68	TA219744.1389	214.81
14.0 mm	TA209744.1400	182.68	TA219744.1400	214.81
14.1 mm	TA209744.1410	222.85	TA219744.1410	262.21
9/16"	TA209744.1429	222.85	TA219744.1429	262.21
14.5 mm	TA209744.1450	222.85	TA219744.1450	262.21
14.6 mm	TA209744.1460	222.85	TA219744.1460	262.21
37/64"	TA209744.1468	222.85	TA219744.1468	262.21
14.8 mm	TA209744.1480	222.85	TA219744.1480	262.21
15.0 mm	TA209744.1500	222.85	TA219744.1500	262.21
19/32"	TA209744.15			



One Tap for Multiple Materials

Spiral Point



UNC – PLUG STYLE – 2B / 3B Class of Fit DIN

Size	DIN / ANSI			
	NT2 Coated		TICN Coated	
	EDP No.	List \$	EDP No.	List \$
#4-40	BU497300.5003	18.97	BU499300.5003	24.13
#5-40	BU497300.5004	19.22	BU499300.5004	24.87
#6-32	BU497300.5005	16.33	BU499300.5005	21.49
#8-32	BU497300.5006	16.33	BU499300.5006	21.49
#10-24	BU497300.5007	17.06	BU499300.5007	23.54
#12-24	BU497300.5008	18.13	BU499300.5008	23.42
1/4-20	BU497300.5009	17.06	BU499300.5009	23.54
5/16-18	BU497300.5010	18.39	BU499300.5010	27.02
3/8-16	BU497300.5011	21.14	BU499300.5011	29.91
7/16-14	CU497300.5012	27.14	CU499300.5012	38.92
1/2-13	CU497300.5013	32.67	CU499300.5013	46.24
9/16-12	CU497300.5014	46.13	CU499300.5014	61.25
5/8-11	CU497300.5015	55.74	CU499300.5015	72.18
3/4-10	CU497300.5016	85.51	CU499300.5016	111.10
7/8-9	CU497300.5017	140.65	CU499300.5017	154.94
1"-8	CU497300.5018	187.30	CU499300.5018	205.39

Spiral Flute



UNC – SEMI-BOTTOMING STYLE – 2B / 3B Class of Fit

Size	DIN / ANSI			
	NT2 Coated		TICN Coated	
	EDP No.	List \$	EDP No.	List \$
#4-40	BU533200.5003	25.83	BU539300.5003	31.22
#5-40	BU533200.5004	26.42	BU539300.5004	32.19
#6-32	BU533200.5005	22.33	BU539300.5005	27.62
#8-32	BU533200.5006	22.33	BU539300.5006	27.62
#10-24	BU533200.5007	23.18	BU539300.5007	29.78
#12-24	BU533200.5008	25.34	BU539300.5008	30.27
1/4-20	BU533200.5009	24.50	BU539300.5009	31.22
5/16-18	BU533200.5010	27.87	BU539300.5010	36.76
3/8-16	BU533200.5011	31.22	BU539300.5011	40.24
7/16-14	CU533200.5012	40.13	CU539300.5012	52.25
1/2-13	CU533200.5013	47.68	CU539300.5013	61.62
9/16-12	CU533200.5014	72.07	CU539300.5014	87.92
5/8-11	CU533200.5015	81.67	CU539300.5015	98.85
3/4-10	CU533200.5016	111.35	CU539300.5016	137.65
7/8-9	CU533200.5017	176.32	CU539300.5017	184.96
1"-8	CU533200.5018	206.60	CU539300.5018	217.41

UNF – PLUG STYLE – 2B / 3B Class of Fit DIN

#4-48	BU497300.5037	18.97	BU499300.5037	24.87
#5-44	BU497300.5038	21.14	BU499300.5038	25.83
#6-40	BU497300.5039	19.22	BU499300.5039	22.94
#8-36	BU497300.5040	18.03	BU499300.5040	22.69
#10-32	BU497300.5041	17.06	BU499300.5041	23.54
#12-28	BU497300.5042	18.13	BU499300.5042	23.54
1/4-28	BU497300.5043	17.06	BU499300.5043	23.54
5/16-24	BU497300.5044	18.97	BU499300.5044	25.71
3/8-24	BU497300.5045	21.74	BU499300.5045	27.62
7/16-20	CU497300.5046	27.87	CU499300.5046	39.64
1/2-20	CU497300.5047	33.39	CU499300.5047	46.96
9/16-18	CU497300.5048	48.89	CU499300.5048	66.07
5/8-18	CU497300.5049	59.94	CU499300.5049	76.52
3/4-16	CU497300.5050	93.81	CU499300.5050	119.64
7/8-14	CU497300.5051	147.73	CU499300.5051	164.55
1"-12	CU497300.5052	196.69	CU499300.5052	196.69

UNF – SEMI-BOTTOMING STYLE – 2B / 3B Class of Fit

#4-48	BU533200.5037	25.83	BU539300.5037	32.31
#5-44	BU533200.5038	28.59	BU539300.5038	33.28
#6-40	BU533200.5039	22.33	BU539300.5039	29.55
#8-36	BU533200.5040	24.27	BU539300.5040	28.95
#10-32	BU533200.5041	23.18	BU539300.5041	29.78
#12-28	BU533200.5042	25.34	BU539300.5042	30.50
1/4-28	BU533200.5043	24.50	BU539300.5043	31.22
5/16-24	BU533200.5044	27.87	BU539300.5044	36.76
3/8-24	BU533200.5045	31.22	BU539300.5045	40.24
7/16-20	CU533200.5046	40.13	CU539300.5046	52.25
1/2-20	CU533200.5047	47.68	CU539300.5047	61.62
9/16-18	CU533200.5048	78.91	CU539300.5048	98.00
5/8-18	CU533200.5049	88.99	CU539300.5049	106.43
3/4-16	CU533200.5050	116.75	CU539300.5050	143.17
7/8-14	CU533200.5051	184.60	CU539300.5051	192.18
1"-12	CU533200.5052	213.79	CU539300.5052	222.21

Spiral Point



METRIC COARSE – PLUG STYLE – 6H Class of Fit

Size	DIN / ANSI				Size	DIN / DIN			
	NT2 Coated		TICN Coated			NT2 Coated		TICN Coated	
	EDP No.	List \$	EDP No.	List \$		EDP No.	List \$	EDP No.	List \$
M 4 x 0.7	BU497300.0040	19.34	BU499300.0040	24.03	M 4 x 0.7	B1577300.0040	18.97	B1579300.0040	24.03
M 5 x 0.8	BU497300.0050	19.45	BU499300.0050	25.46	M 5 x 0.8	B1577300.0050	18.97	B1579300.0050	25.46
M 6 x 1.0	BU497300.0060	21.14	BU499300.0060	27.14	M 6 x 1.0	B1577300.0060	20.53	B1579300.0060	27.14
M 8 x 1.25	BU497300.0080	23.77	BU499300.0080	31.94	M 8 x 1.25	B1577300.0080	23.18	B1579300.0080	31.94
M 10 x 1.5	BU497300.0100	30.16	BU499300.0100	38.31	M 10 x 1.5	B1577300.0100	29.30	B1579300.0100	38.31
M 12 x 1.75	CU497300.0112	36.52	CU499300.0112	49.13	M 12 x 1.75	C1577300.0112	35.56	C1579300.0112	49.13
M 16 x 2.0	CU497300.0116	62.82	CU499300.0116	77.71	M 16 x 2.0	C1577300.0116	61.14	C1579300.0116	77.71
M 18 x 2.5	CU497300.0118	96.81	CU499300.0118	120.00	M 18 x 2.5	C1577300.0118	96.81	C1579300.0118	120.00
M 20 x 2.5	CU497300.0120	86.12	CU499300.0120	113.15	M 20 x 2.5	C1577300.0120	86.12	C1579300.0120	113.15
M 24 x 3.0	CU497300.0124	126.96	CU499300.0124	153.98	M 24 x 3.0	C1577300.0124	126.96	C1579300.0124	153.98



One Tap for Multiple Materials

Spiral Flute



METRIC COARSE – SEMI-BOTTOMING STYLE – 6H Class of Fit

DIN / ANSI					DIN / DIN				
Size	NT2 Coated		TICN Coated		Size	NT2 Coated		TICN Coated	
	EDP No.	List \$	EDP No.	List \$		EDP No.	List \$	EDP No.	List \$
M 4 x 0.7	BU533200.0040	23.77	BU539300.0040	28.46	M 4 x 0.7	B4933200.0040	23.18	B4939300.0040	28.46
M 5 x 0.8	BU533200.0050	23.77	BU539300.0050	29.78	M 5 x 0.8	B4933200.0050	23.18	B4939300.0050	29.78
M 6 x 1.0	BU533200.0060	25.23	BU539300.0060	31.22	M 6 x 1.0	B4933200.0060	24.50	B4939300.0060	31.22
M 8 x 1.25	BU533200.0080	31.47	BU539300.0080	39.64	M 8 x 1.25	B4933200.0080	30.62	B4939300.0080	39.64
M 10 x 1.5	BU533200.0100	34.36	BU539300.0100	42.52	M 10 x 1.5	B4933200.0100	33.39	B4939300.0100	42.52
M 12 x 1.75	CU533200.0112	43.36	CU539300.0112	55.97	M 12 x 1.75	C4933200.0112	42.16	C4939300.0112	55.97
M 16 x 2.0	CU533200.0116	69.78	CU539300.0116	84.68	M 16 x 2.0	C4933200.0116	67.87	C4939300.0116	84.68
M 18 x 2.5	CU533200.0118	105.70	CU539300.0118	128.87	M 18 x 2.5	C4933200.0118	105.70	C4939300.0118	128.87
M 20 x 2.5	CU533200.0120	99.09	CU539300.0120	126.12	M 20 x 2.5	C4933200.0120	99.09	C4939300.0120	126.12
M 24 x 3.0	CU533200.0124	134.65	CU539300.0124	161.67	M 24 x 3.0	C4933200.0124	134.65	C4939300.0124	161.67

Extended Length Spiral Point – Plug Style

UNC – 2B / 3B Class of Fit

Size	DIN / ANSI	
	EDP No.	List \$
#6-32	BU797300.5005	56.67
#8-32	BU797300.5006	52.22
#10-24	BU797300.5007	65.90
1/4-20	BU797300.5009	99.77
5/16-18	BU797300.5010	112.40
3/8-16	BU797300.5011	127.48
7/16-14	CU797300.5012	144.87
1/2-13	CU797300.5013	150.60
5/8-11	CU797300.5015	155.51

UNF – 2B / 3B Class of Fit

#6-40	BU797300.5039	57.72
#8-36	BU797300.5040	53.40
#10-32	BU797300.5041	65.90
1/4-28	BU797300.5043	99.77
5/16-24	BU797300.5044	112.99
3/8-24	BU797300.5045	128.05
7/16-20	CU797300.5046	145.59
1/2-20	CU797300.5047	151.31
5/8-18	CU797300.5049	159.84

METRIC COARSE – 6H Class of Fit

Size	DIN / DIN	
	EDP No.	List \$
M 3 x 0.5	B1667300.0030	80.84
M 4 x 0.7	B1667300.0040	76.99
M 5 x 0.8	B1667300.0050	90.44
M 6 x 1.0	B1667300.0060	92.89
M 8 x 1.25	B1667300.0080	141.74
M 10 x 1.5	C1667300.0100	157.96
M 12 x 1.75	C1667300.0112	190.46
M 14 x 2.0	C1667300.0114	238.24
M 16 x 2.0	C1667300.0116	207.74
M 18 x 2.5	C1667300.0118	296.30
M 20 x 2.5	C1667300.0120	299.46

Extended Length Spiral Flute – Semi-Bottoming

UNC – 2B / 3B Class of Fit

Size	DIN / ANSI	
	EDP No.	List \$
#6-32	BU783200.5005	62.73
#8-32	BU783200.5006	58.30
#10-24	BU783200.5007	72.09
1/4-20	BU783200.5009	107.38
5/16-18	BU783200.5010	122.09
3/8-16	BU783200.5011	137.75
7/16-14	CU783200.5012	158.20
1/2-13	CU783200.5013	165.91
5/8-11	CU783200.5015	182.03

UNF – 2B / 3B Class of Fit

#6-40	BU783200.5039	64.38
#8-36	BU783200.5040	59.59
#10-32	BU783200.5041	72.09
1/4-28	BU783200.5043	107.38
5/16-24	BU783200.5044	122.09
3/8-24	BU783200.5045	137.75
7/16-20	CU783200.5046	158.20
1/2-20	CU783200.5047	165.91
5/8-18	CU783200.5049	189.63

METRIC COARSE – 6H Class of Fit

Size	DIN / DIN	
	EDP No.	List \$
M 3 x 0.5	B5863200.0030	86.00
M 4 x 0.7	B5863200.0040	78.75
M 5 x 0.8	B5863200.0050	92.89
M 6 x 1.0	B5863200.0060	95.68
M 8 x 1.25	B5863200.0080	146.99
M 10 x 1.5	C5863200.0100	172.45
M 12 x 1.75	C5863200.0112	196.52
M 14 x 2.0	C5863200.0114	245.95
M 16 x 2.0	C5863200.0116	212.19
M 18 x 2.5	C5863200.0118	303.32
M 20 x 2.5	C5863200.0120	308.79

Roll Form



UNC – MultiTAP-FORM – 2B / 3B Class of Fit

Size	DIN / ANSI		DIN / ANSI	
	EDP No.	List \$	EDP No.	List \$
#4-40	BU591410.5003	30.98	BU599010.5003	34.22
#5-40	BU591410.5004	32.43	BU599010.5004	35.74
#6-32	BU591410.5005	26.78	BU599010.5005	29.91
#8-32	BU591410.5006	26.78	BU599010.5006	29.91
#10-24	BU591410.5007	27.87	BU599010.5007	30.96
#12-24	BU591410.5008	29.91	BU599010.5008	32.02
1/4-20	BU591410.5009	29.44	BU599010.5009	32.37
5/16-18	BU591410.5010	33.51	BU599010.5010	37.73
3/8-16	BU591410.5011	37.61	BU599010.5011	41.94
7/16-14	CU031410.5012	60.42	CU039010.5012	65.08
1/2-13	CU031410.5013	62.23	CU039010.5013	66.95

UNF – MultiTAP-FORM – 2B / 3B Class of Fit

#4-48	BU591410.5037	35.56	BU599010.5037	38.80
#5-44	BU591410.5038	34.72	BU599010.5038	37.86
#6-40	BU591410.5039	26.78	BU599010.5039	30.61
#8-36	BU591410.5040	26.78	BU599010.5040	30.61
#10-32	BU591410.5041	27.87	BU599010.5041	31.67
#12-28	BU591410.5042	29.91	BU599010.5042	32.83
1/4-28	BU591410.5043	29.44	BU599010.5043	33.18
5/16-24	BU591410.5044	33.51	BU599010.5044	38.56
3/8-24	BU591410.5045	37.61	BU599010.5045	42.88
7/16-20	CU031410.5046	62.69	CU039010.5046	67.41
1/2-20	CU031410.5047	64.27	CU039010.5047	69.05

METRIC – MultiTAP-FORM – 6H Class of Fit

Size	DIN / DIN		DIN / DIN	
	EDP No.	List \$	EDP No.	List \$
M 2 x 0.4	B5991400.0020	43.60	B5999000.0020	48.27
M 3 x 0.5	B5991400.0030	27.87	B5999000.0030	31.67
M 4 x 0.7	B5991400.0040	27.87	B5999000.0040	31.67
M 5 x 0.8	B5991400.0050	27.87	B5999000.0050	31.67
M 6 x 1.0	B5991400.0060	29.44	B5999000.0060	33.18
M 8 x 1.25	B5991400.0080	36.76	B5999000.0080	42.07
M 10 x 1.5	B5991400.0100	40.00	B5999000.0100	45.45



Thread Gages: Stocked in the USA and ready to ship!

UNC

	Size (in)	EDP No.	List \$
2B Class of Fit	#1-64	L0100100.5000	140.03
	#2-56	L0100100.5001	133.10
	#3-48	L0100100.5002	113.24
	#4-40	L0100100.5003	110.84
	#5-40	L0100100.5004	103.90
	#6-32	L0100100.5005	102.03
	#8-32	L0100100.5006	98.01
	#10-24	L0100100.5007	95.61
	#12-24	L0100100.5008	91.51
	1/4-20	L0100100.5009	90.46
	5/16-18	L0100100.5010	95.08
	3/8-16	L0100100.5011	96.87
	7/16-14	L0100100.5012	100.96
	1/2-13	L0100100.5013	110.30
	9/16-12	L0100100.5014	114.30
	5/8-11	L0100100.5015	118.94
	3/4-10	L0100100.5016	135.22
	7/8-9	L0100100.5017	157.48
	1"-8	L0100100.5018	173.88
	1 1/8-7	L0100100.5019	197.18
1 1/4-7	L0100100.5020	197.18	
1 3/8-6	L0100100.5021	233.24	
1 1/2-6	L0100100.5022	254.34	
3B Class of Fit	#1-64	L0100110.5000	168.72
	#2-56	L0100110.5001	160.35
	#3-48	L0100110.5002	136.44
	#4-40	L0100110.5003	133.53
	#5-40	L0100110.5004	125.17
	#6-32	L0100110.5005	122.94
	#8-32	L0100110.5006	118.10
	#10-24	L0100110.5007	115.20
	#12-24	L0100110.5008	110.27
	1/4-20	L0100110.5009	108.98
	5/16-18	L0100110.5010	114.54
	3/8-16	L0100110.5011	116.16
	7/16-14	L0100110.5012	121.34
	1/2-13	L0100110.5013	129.52
	9/16-12	L0100110.5014	135.22
	5/8-11	L0100110.5015	143.49
	3/4-10	L0100110.5016	163.35
	7/8-9	L0100110.5017	189.73
	1"-8	L0100110.5018	209.48
	1 1/8-7	L0100110.5019	237.57
1 1/4-7	L0100110.5020	237.57	
1 3/8-6	L0100110.5021	281.01	
1 1/2-6	L0100110.5022	306.44	

UNF

	Size (in)	EDP No.	List \$
2B Class of Fit	#0-80	L0100100.5033	166.82
	#1-72	L0100100.5034	140.03
	#2-64	L0100100.5035	133.10
	#3-56	L0100100.5036	124.81
	#4-48	L0100100.5037	110.84
	#5-44	L0100100.5038	103.90
	#6-40	L0100100.5039	102.03
	#8-36	L0100100.5040	98.01
	#10-32	L0100100.5041	95.61
	#12-28	L0100100.5042	92.76
	1/4-28	L0100100.5043	91.51
	5/16-24	L0100100.5044	95.08
	3/8-24	L0100100.5045	96.87
	7/16-20	L0100100.5046	100.96
	1/2-20	L0100100.5047	110.30
	9/16-18	L0100100.5048	113.95
	5/8-18	L0100100.5049	116.74
	3/4-16	L0100100.5050	128.27
	7/8-14	L0100100.5051	144.68
	1"-12	L0100100.5052	160.96
1 1/8-12	L0100100.5053	173.51	
1 1/4-12	L0100100.5054	186.67	
1 3/8-12	L0100100.5055	204.14	
1 1/2-12	L0100100.5056	227.55	
3B Class of Fit	#0-80	L0100110.5033	201.00
	#1-72	L0100110.5034	168.72
	#2-64	L0100110.5035	160.35
	#3-56	L0100110.5036	150.38
	#4-48	L0100110.5037	133.53
	#5-44	L0100110.5038	125.17
	#6-40	L0100110.5039	122.94
	#8-36	L0100110.5040	118.10
	#10-32	L0100110.5041	115.20
	#12-28	L0100110.5042	111.77
	1/4-28	L0100110.5043	110.27
	5/16-24	L0100110.5044	114.54
	3/8-24	L0100110.5045	116.16
	7/16-20	L0100110.5046	121.34
	1/2-20	L0100110.5047	129.52
	9/16-18	L0100110.5048	135.22
	5/8-18	L0100110.5049	140.03
	3/4-16	L0100110.5050	154.02
	7/8-14	L0100110.5051	174.31
	1"-12	L0100110.5052	193.93
1 1/8-12	L0100110.5053	209.05	
1 1/4-12	L0100110.5054	224.91	
1 3/8-12	L0100110.5055	245.94	
1 1/2-12	L0100110.5056	274.14	

UNEF

	Size (in)	EDP No.	List \$
2B Class of Fit	1/4-32	L0100100.5058	133.55
	5/16-32	L0100100.5059	137.59
	3/8-32	L0100100.5060	145.80
	7/16-28	L0100100.5061	149.83
	1/2-28	L0100100.5062	152.48
	9/16-24	L0100100.5063	156.64
	5/8-24	L0100100.5064	162.05
	3/4-20	L0100100.5066	172.91
	7/8-20	L0100100.5068	190.69
	1"-20	L0100100.5070	209.85
3B Class of Fit	1/4-32	L0100110.5058	643.88
	5/16-32	L0100110.5059	731.36
	3/8-32	L0100110.5060	743.20
	7/16-28	L0100110.5061	749.54
	1/2-28	L0100110.5062	755.06
	9/16-24	L0100110.5063	773.27
	5/8-24	L0100110.5064	779.66
7/8-20	L0100110.5068	939.15	
1"-20	L0100110.5070		



STI UNC

	Size (in)	EDP No.	List \$
2B Class of Fit	#2-56	L0100100.5609	158.56
	#4-40	L0100100.5611	133.31
	#5-40	L0100100.5612	124.86
	#6-32	L0100100.5613	121.78
	#8-32	L0100100.5614	116.80
	#10-24	L0100100.5615	114.48
	#12-24	L0100100.5616	109.88
	1/4-20	L0100100.5617	108.32
	5/16-18	L0100100.5618	113.91
	3/8-16	L0100100.5619	115.45
	7/16-14	L0100100.5620	120.64
	1/2-13	L0100100.5621	128.90
	9/16-12	L0100100.5622	135.64
	5/8-11	L0100100.5623	140.05
	3/4-10	L0100100.5624	159.51
7/8-9	L0100100.5625	185.55	
1"-8	L0100100.5626	201.49	



STI UNC (CONT.)

	Size (in)	EDP No.	List \$
3B Class of Fit	#2-56	L0100110.5609	191.28
	#4-40	L0100110.5611	157.15
	#5-40	L0100110.5612	148.87
	#6-32	L0100110.5613	146.89
	#8-32	L0100110.5614	140.79
	#10-24	L0100110.5615	138.05
	#12-24	L0100110.5616	132.52
	1/4-20	L0100110.5617	130.55
	5/16-18	L0100110.5618	137.44
	3/8-16	L0100110.5619	138.28
	7/16-14	L0100110.5620	145.73
	1/2-13	L0100110.5621	153.80
	9/16-12	L0100110.5622	159.51
	5/8-11	L0100110.5623	168.40
	3/4-10	L0100110.5624	191.23
	7/8-9	L0100110.5625	219.81
	1"-8	L0100110.5626	238.93

STI UNF

	Size (in)	EDP No.	List \$
2B Class of Fit	#4-48	L0100100.5633	130.05
	#6-40	L0100100.5635	121.78
	#8-36	L0100100.5636	116.80
	#10-32	L0100100.5637	114.48
	1/4-28	L0100100.5639	108.32
	5/16-24	L0100100.5640	113.91
	3/8-24	L0100100.5641	115.45
	7/16-20	L0100100.5642	120.64
	1/2-20	L0100100.5643	128.90
	9/16-18	L0100100.5644	135.64
3B Class of Fit	5/8-18	L0100100.5645	140.05
	3/4-16	L0100100.5646	153.76
	7/8-14	L0100100.5647	172.59
	1"-12	L0100100.5648	191.89
	#4-48	L0100110.5633	157.15
	#6-40	L0100110.5635	146.89
	#8-36	L0100110.5636	140.79
	#10-32	L0100110.5637	138.05
	1/4-28	L0100110.5639	130.55
	5/16-24	L0100110.5640	137.44
3/8-24	L0100110.5641	138.28	
7/16-20	L0100110.5642	145.73	
1/2-20	L0100110.5643	153.80	
9/16-18	L0100110.5644	159.51	
5/8-18	L0100110.5645	168.40	
3/4-16	L0100110.5646	184.34	
7/8-14	L0100110.5647	209.35	
1"-12	L0100110.5648	230.31	



NPT

Size (in)	EDP No.	List \$
1/16-27	L0500100.5763	258.98
1/8-27	L0500100.5764	270.71
1/4-18	L0500100.5765	289.33
3/8-18	L0500100.5766	314.96
1/2-14	L0500100.5767	335.97
3/4-14	L0500100.5768	385.04
1"-11-1/2	L0500100.5769	443.34



METRIC/ANSI*

Size (in)	EDP No.	List \$	
M 1.6 x 0.35	LU100100.0016	233.82	
M 2 x 0.4	LU100100.0020	149.38	
M 2.5 x 0.45	LU100100.0025	104.18	
M 3 x 0.5	LU100100.0030	128.46	
M 3.5 x 0.6	LU100100.0035	125.09	
M 4 x 0.7	LU100100.0040	111.98	
M 5 x 0.8	LU100100.0050	125.09	
M 6 x 1	LU100100.0060	104.49	
6H Class of Fit	M 8 x 1.25	LU100100.0080	104.49
	M 10 x 1.5	LU100100.0100	84.03
	M 11 x 1.5	LU100100.0111	105.22
	M 12 x 1.75	LU100100.0112	105.70
	M 14 x 2	LU100100.0114	137.29
	M 16 x 2	LU100100.0116	122.76
	M 18 x 2.5	LU100100.0118	152.86
	M 20 x 2.5	LU100100.0120	147.76
	M 22 x 2.5	LU100100.0122	168.82
	M 24 x 3	LU100100.0124	190.09
M 30 x 3.5	LU100100.0130	207.84	
M 36 x 4	LU100100.0136	220.83	

METRIC FINE/ANSI*

Size (in)	EDP No.	List \$
M 5 x 0.5	LU100100.0218	122.88
M 6 x 0.75	LU100100.0229	174.59
M 8 x 0.75	LU100100.0250	118.08
M 8 x 1	LU100100.0251	157.01
M 10 x 1	LU100100.0276	164.81
M 10 x 1.25	LU100100.0277	157.01
M 12 x 1.25	LU100100.0302	167.76
M 12 x 1.5	LU100100.0303	165.17
M 14 x 1.5	LU100100.0331	174.59
M 15 x 1.5	LU100100.0345	175.36
M 16 x 1.5	LU100100.0359	181.19
M 18 x 1.5	LU100100.0390	189.37
M 20 x 1.5	LU100100.0422	200.18
M 22 x 1.5	LU100100.0438	209.37

NPTF

Size (in)	EDP No.	List \$
1/16-27	L0520100.5782	527.29
1/8-27	L0520100.5783	555.23
1/4-18	L0520100.5784	576.34
3/8-18	L0520100.5785	618.28
1/2-14	L0520100.5786	676.58
3/4-14	L0520100.5787	746.57

METRIC/DIN**

Size (in)	EDP No.	List \$	
5H Class of Fit	M 1 x 0.25	L0100100.0010	233.82
	M 1.1 x 0.25	L0100100.0011	233.82
	M 1.2 x 0.25	L0100100.0012	233.82
	M 1.4 x 0.3	L0100100.0014	233.82
6H Class of Fit	M 1.6 x 0.35	L0100100.0016	233.82
	M 1.7 x 0.35	L0100100.0017	233.82
	M 1.8 x 0.35	L0100100.0018	233.82
	M 2 x 0.4	L0100100.0020	149.38
	M 2.2 x 0.45	L0100100.0022	155.87
	M 2.3 x 0.4	L0100100.0023	155.87
	M 2.5 x 0.45	L0100100.0025	155.87
	M 2.6 x 0.45	L0100100.0026	155.87
	M 3 x 0.5	L0100100.0030	127.31
	M 3.5 x 0.6	L0100100.0035	124.71
	M 4 x 0.7	L0100100.0040	111.71
	M 4.5 x 0.75	L0100100.0045	116.90
	M 5 x 0.8	L0100100.0050	124.71
	M 6 x 1	L0100100.0060	103.92
	M 7 x 1	L0100100.0070	156.53
	M 8 x 1.25	L0100100.0080	103.92
	M 9 x 1.25	L0100100.0090	119.50
	M 10 x 1.5	L0100100.0100	83.79
	M 11 x 1.5	L0100100.0111	85.73
	M 12 x 1.75	L0100100.0112	105.22
M 14 x 2	L0100100.0114	137.05	
M 16 x 2	L0100100.0116	122.76	
M 18 x 2.5	L0100100.0118	152.64	
M 20 x 2.5	L0100100.0120	147.76	
M 22 x 2.5	L0100100.0122	168.21	
M 24 x 3	L0100100.0124	189.67	
M 27 x 3	L0100100.0127	201.35	
M 30 x 3.5	L0100100.0130	207.84	
M 33 x 3.5	L0100100.0133	246.81	
M 36 x 4	L0100100.0136	220.83	
M 39 x 4	L0100100.0139	318.25	

* Gauge dimensions according to ANSI B1.16M

** Gauge dimensions according to DIN ISO 1502



METRIC FINE/DIN**

Size (in)	EDP No.	List \$
M 2.5 x 0.35	L0100100.0196	155.87
M 2.6 x 0.35	L0100100.0199	155.87
M 3 x 0.35	L0100100.0202	142.89
M 3.5 x 0.35	L0100100.0205	142.89
M 4 x 0.35	L0100100.0209	142.89
M 4 x 0.5	L0100100.0210	142.89
M 4.5 x 0.5	L0100100.0214	142.89
M 5 x 0.35	L0100100.0217	175.85
M 5 x 0.5	L0100100.0218	122.76
M 5 x 0.75	L0100100.0219	155.31
M 6 x 0.35	L0100100.0227	171.68
M 6 x 0.5	L0100100.0228	136.40
M 6 x 0.75	L0100100.0229	174.07
M 7 x 0.75	L0100100.0239	175.36
M 8 x 0.5	L0100100.0249	123.41
M 8 x 0.75	L0100100.0250	117.57
M 8 x 1	L0100100.0251	156.53
M 9 x 0.75	L0100100.0262	158.06
M 9 x 1	L0100100.0263	156.53
M 10 x 0.5	L0100100.0274	167.63
M 10 x 0.75	L0100100.0275	168.87
M 10 x 1	L0100100.0276	164.34
M 10 x 1.25	L0100100.0277	156.53
M 11 x 0.75	L0100100.0287	161.99
M 11 x 1	L0100100.0288	158.48
M 12 x 0.5	L0100100.0299	185.26
M 12 x 0.75	L0100100.0300	167.63
M 12 x 1	L0100100.0301	175.36
M 12 x 1.25	L0100100.0302	167.56
M 12 x 1.5	L0100100.0303	164.98
M 13 x 1	L0100100.0315	156.53
M 13 x 1.5	L0100100.0317	156.53
M 14 x 1	L0100100.0329	161.08
M 14 1.25	L0100100.0330	161.08
M 14 x 1.5	L0100100.0331	174.59
M 15 x 1	L0100100.0343	175.36
M 15 x 1.5	L0100100.0345	175.36
M 16 x 0.5	L0100100.0355	208.47
M 16 x 0.75	L0100100.0356	197.59
M 16 x 1	L0100100.0357	175.36
M 16 x 1.5	L0100100.0359	180.56
M 17 x 1	L0100100.0372	183.17
M 17 x 1.5	L0100100.0374	183.17
M 18 x 1	L0100100.0388	189.01
M 18 x 1.5	L0100100.0390	189.01
M 18 x 2	L0100100.0391	189.01
M 19 x 1	L0100100.0404	201.35
M 19 x 1.5	L0100100.0406	141.69
M 20 x 0.5	L0100100.0418	232.95
M 20 x 0.75	L0100100.0419	220.53

METRIC FINE/DIN** (CONT.)

Size (in)	EDP No.	List \$
M 20 x 1	L0100100.0420	155.87
M 20 x 1.5	L0100100.0422	200.04
M 20 x 2	L0100100.0423	155.87
M 21 x 1	L0100100.0428	207.84
M 21 x 1.5	L0100100.0430	154.00
M 22 x 1	L0100100.0436	209.13
M 22 x 1.5	L0100100.0438	209.13
M 22 x 2	L0100100.0439	209.13
M 23 x 1	L0100100.0443	224.74
M 24 x 1	L0100100.0450	220.19
M 24 x 1.5	L0100100.0452	220.19
M 24 x 2	L0100100.0453	225.39
M 25 x 1	L0100100.0456	240.31
M 25 x 1.5	L0100100.0458	240.31
M 25 x 2	L0100100.0459	240.31
M 26 x 1	L0100100.0462	240.31
M 26 x 1.5	L0100100.0464	240.31
M 26 x 2	L0100100.0465	240.31
M 27 x 1	L0100100.0468	272.78
M 27 1.5	L0100100.0470	272.78
M 27 x 2	L0100100.0471	272.78
M 28 x 1	L0100100.0474	272.78
M 28 x 1.5	L0100100.0476	272.78
M 28 x 2	L0100100.0477	272.78
M 30 x 0.75	L0100100.0487	318.86
M 30 x 1	L0100100.0488	233.82
M 30 x 1.5	L0100100.0490	233.82
M 30 x 2	L0100100.0491	233.82
M 30 x 3	L0100100.0492	233.82
M 32 x 1	L0100100.0502	240.31
M 32 x 1.5	L0100100.0504	240.31
M 32 x 2	L0100100.0505	240.31
M 33 x 1	L0100100.0509	246.81
M 33 x 1.5	L0100100.0511	246.81
M 33 x 2	L0100100.0512	246.81
M 33 x 3	L0100100.0513	246.81
M 34 x 1	L0100100.0516	253.31
M 34 x 1.5	L0100100.0518	253.31
M 34 x 2	L0100100.0519	253.31
M 35 x 1	L0100100.0523	253.31
M 35 x 1.5	L0100100.0525	253.31
M 35 x 2	L0100100.0526	253.31
M 36 x 1	L0100100.0530	246.81
M 36 x 1.5	L0100100.0532	246.81
M 36 x 2	L0100100.0533	246.81
M 36 x 3	L0100100.0534	246.81
M 38 x 1	L0100100.0544	246.81
M 38 x 1.5	L0100100.0546	272.78
M 38 x 2	L0100100.0547	272.78
M 39 x 1	L0100100.0551	272.78

METRIC FINE/DIN** (CONT.)

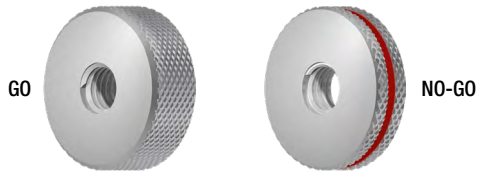
Size (in)	EDP No.	List \$
M 39 x 1.5	L0100100.0553	318.25
M 39 x 2	L0100100.0554	298.76
M 39 x 3	L0100100.0555	318.25
M 40 x 1	L0100100.0558	376.72
M 40 x 1.5	L0100100.0560	376.72
M 40 x 2	L0100100.0561	376.72
M 40 x 3	L0100100.0562	376.72



SELF-LOCK™ LK

Size (in)	EDP No.	List \$
#4-40	L0100100.5656	331.80
#6-32	L0100100.5658	308.12
#8-32	L0100100.5659	293.88
#10-24	L0100100.5660	287.64
#12-24	L0100100.5661	274.92
1/4-20	L0100100.5662	270.19
5/16-18	L0100100.5663	286.05
3/8-16	L0100100.5664	290.75
7/16-14	L0100100.5665	304.98
1/2-13	L0100100.5666	328.69
9/16-12	L0100100.5667	347.64
5/8-11	L0100100.5668	360.28
3/4-10	L0100100.5669	404.52
7/8-9	L0100100.5670	477.26
1"-8	L0100100.5671	521.42
#4-48	L0100100.5707	331.80
#6-40	L0100100.5709	308.12
#8-36	L0100100.5710	293.88
#10-32	L0100100.5711	287.64
1/4-28	L0100100.5713	274.92
5/16-24	L0100100.5714	285.85
3/8-24	L0100100.5715	290.75
7/16-20	L0100100.5716	304.98
1/2-20	L0100100.5717	328.69
9/16-18	L0100100.5718	347.64
5/8-18	L0100100.5719	360.28
3/4-16	L0100100.5720	404.52
M 3 x 0.5	L0100100.1046	258.77
M 4 x 0.7	L0100100.1048	246.54
M 5 x 0.8	L0100100.1050	239.67
M 6 x 1	L0100100.1052	217.32
M 8 x 1.25	L0100100.1054	239.67
M 10 x 1.5	L0100100.1056	246.41
M 12 x 1.75	L0100100.1058	262.39
M 14 x 2	L0100100.1059	296.99
M 16 x 2	L0100100.1060	313.31
M 20 x 2.5	L0100100.1062	381.38
M 24 x 3	L0100100.1064	460.45

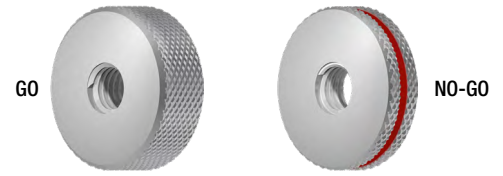
** Gage dimensions according to DIN ISO 1502



NEW UNC

Size (in)**	GO RING GAGES EDP No.	NO-GO RING GAGES EDP No.	List \$
#2-56	L0200500.5001	L0300500.5001	136.34
#4-40	L0200500.5003	L0300500.5003	108.96
#6-32	L0200500.5005	L0300500.5005	101.76
#8-32	L0200500.5006	L0300500.5006	96.10
#10-24	L0200500.5007	L0300500.5007	93.91
1/4-20	L0200500.5009	L0300500.5009	92.96
5/16-18	L0200500.5010	L0300500.5010	97.54
3/8-16	L0200500.5011	L0300500.5011	101.77
7/16-14	L0200500.5012	L0300500.5012	108.96
1/2-13	L0200500.5013	L0300500.5013	123.92
9/16-12	L0200500.5014	L0300500.5014	134.81
5/8-11	L0200500.5015	L0300500.5015	152.48
3/4-10	L0200500.5016	L0300500.5016	165.30
7/8-9	L0200500.5017	L0300500.5017	189.55
1"-8	L0200500.5018	L0300500.5018	212.43
1 1/4-7	L0200500.5020	L0300500.5020	275.19
1 3/8-6	L0200500.5021	L0300500.5021	310.63
1 1/2-6	L0200500.5022	L0300500.5022	327.03
2" -4 1/2	L0200500.5024	L0300500.5024	435.86

2A Tolerance



NEW UNF

Size (in)**	GO RING GAGES EDP No.	NO-GO RING GAGES EDP No.	List \$
#0-80	L0200500.5033	L0300500.5033	166.63
#2-64	L0200500.5035	L0300500.5035	136.34
#4-48	L0200500.5037	L0300500.5037	108.96
#6-40	L0200500.5039	L0300500.5039	101.76
#8-36	L0200500.5040	L0300500.5040	96.10
#10-32	L0200500.5041	L0300500.5041	93.90
1/4-28	L0200500.5043	L0300500.5043	89.78
5/16-24	L0200500.5044	L0300500.5044	97.54
3/8-24	L0200500.5045	L0300500.5045	101.76
7/16-20	L0200500.5046	L0300500.5046	108.96
1/2-20	L0200500.5047	L0300500.5047	123.98
5/8-18	L0200500.5049	L0300500.5049	152.50
3/4-16	L0200500.5050	L0200500.5050	165.30
7/8-14	L0200500.5051	L0300500.5051	189.48
1"-12	L0200500.5052	L0300500.5052	212.43
1 1/8-12	L0200500.5053	L0300500.5053	254.64
1 1/4-12	L0200500.5054	L0300500.5054	275.19
1 3/8-12	L0200500.5055	L0300500.5055	310.63
1 1/2-12	L0200500.5056	L0300500.5056	327.03

2A Tolerance

NEW METRIC/DIN

Size (mm)**	GO RING GAGES EDP No.	NO-GO RING GAGES EDP No.	List \$
M2 x .4	L0200500.0020	L0300500.0020	138.85
M2.5 x .45	L0200500.0025	L0300500.0025	105.56
M3 x .5	L0200500.0030	L0300500.0030	92.96
M4 x .7	L0200500.0040	L0300500.0040	87.00
M5 x .8	L0200500.0050	L0300500.0050	87.00
M6 x 1	L0200500.0060	L0300500.0060	87.00
M8 x 1.25	L0200500.0080	L0300500.0080	88.08
M10 x 1.5	L0200500.0100	L0300500.0100	98.12
M12 x 1.75	L0200500.0112	L0300500.0112	112.49
M14 x 2	L0200500.0114	L0300500.0114	125.22
M16 x 2	L0200500.0116	L0300500.0116	137.57
M18 x 2.5	L0200500.0118	L0300500.0118	153.22
M20 x 2.5	L0200500.0120	L0300500.0120	166.63
M24 x 3	L0200500.0124	L0300500.0124	198.09
M30 x 3.5	L0200500.0130	L0300500.0130	234.39
M36 X 4	L0200500.0136	L0300500.0136	302.29
M42 X 4.5	L0200500.0142	L0300500.0142	346.06
M56 X 5.5	L0200500.0156	L0300500.0156	446.83
M68 X 6	L0200500.0168	L0300500.0168	536.75

6g Tolerance

NEW METRIC FINE/DIN

Size (mm)**	GO RING GAGES EDP No.	NO-GO RING GAGES EDP No.	List \$
M8 x 1	L0200500.0251	L0300500.0251	96.10
M10 x 1	L0200500.0276	L0300500.0276	106.31
M10 x 1.25	L0200500.0277	L0300500.0277	119.90
M12 x 1	L0200500.0301	L0300500.0301	119.90
M12 x 1.25	L0200500.0302	L0300500.0302	133.55
M12 x 1.5	L0200500.0303	L0300500.0303	116.39
M14 x 1	L0200500.0329	L0300500.0329	128.77
M14 x 1.25	L0200500.0330	L0300500.0330	151.22
M14 x 1.5	L0200500.0331	L0300500.0331	125.23
M16 x 1	L0200500.0357	L0300500.0357	137.59
M16 x 1.5	L0200500.0359	L0300500.0359	134.81
M20 x 1	L0200500.0420	L0300500.0420	156.92
M20 x 1.5	L0200500.0422	L0300500.0422	154.56
M24 x 1	L0200500.0450	L0300500.0450	182.22
M24 x 1.5	L0200500.0452	L0300500.0452	176.66
M30 X 1	L0200500.0488	L0300500.0488	232.94
M36 X 2	L0200500.0533	L0300500.0533	253.37
M42 X 1.5	L0200500.0574	L0300500.0574	296.99
M48 X 1	L0200500.0614	L0300500.0614	346.06

6g Tolerance

Distributed by: