

AQUA DRILL EX FLAT SERIES

Exciting News! Starting April, Get Ready to Find the Aqua Drill EX Flat Bottom Drills (L9610 and L9611) at These PT Solutions Distribution Centers:

Novi - CDC

40333 W 14 Mile Rd
Novi, MI 48377-1609

La Palma - DC

6841 Marlin Circle
La Palma, CA 90623-1016

Pearland - DC

14751 Kirby Drive
Houston, TX 77047-2568



Find diameter
information in PT
Solutions E-Catalog

Pages A130 & A131



AQUA DRILL EX FLAT

NACHI

THE #1 SELLING FLAT BOTTOM DRILL

FLAT BOTTOM FEATURES

- One Drill does it all - Eliminates the need to use a "center drill" or "end mill" on inclined or curved surfaces
- True 180 flat cutting edges creates minimal exit burr in Tubing and Thin Plates
- Fluting that is designed to evacuate the chips like a drill
- Multilayer Aqua EX coating for high heat and wear resistance



CUSTOMER SUCCESS: OFF CENTER CURVED ENTRY - TAP DRILL HOLE

L9610 3.7MM AQUA EX FLAT STUB

MATERIAL: 303 STAINLESS

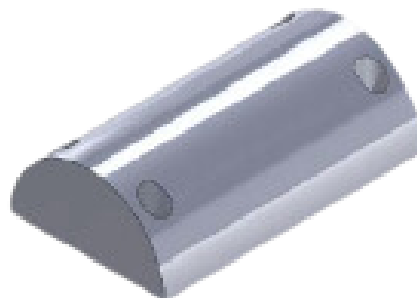
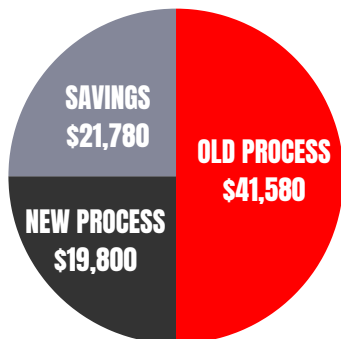
OLD PROCESS

- 3 STEP PROCESS: ENDMILL, SPOT, DRILL
- CYCLE TIME - 11.55 MINUTES
- COST PER PART - \$23.10
- ANNUAL COST - \$41,580

NEW PROCESS

- 1 STEP PROCESS: NACHI FLAT BOTTOM DRILL
- CYCLE TIME - 5.5 MINUTES
- COST PER PART - \$11.00
- ANNUAL COST - \$19,800

HIGHLIGHTS: REDUCED FROM A 3 TOOL PROCESS DOWN TO A 1 TOOL PROCESS AND SAVED THE CUSTOMER OVER 50% IN CYCLE TIME AND MACHINING COSTS!



LINK TO AQUA EX FLAT BROCHURE:

